



# XGA Option Operating Procedure

*Revised Edition for Rev 2.2*

**August 2007**

© Eastview Industries

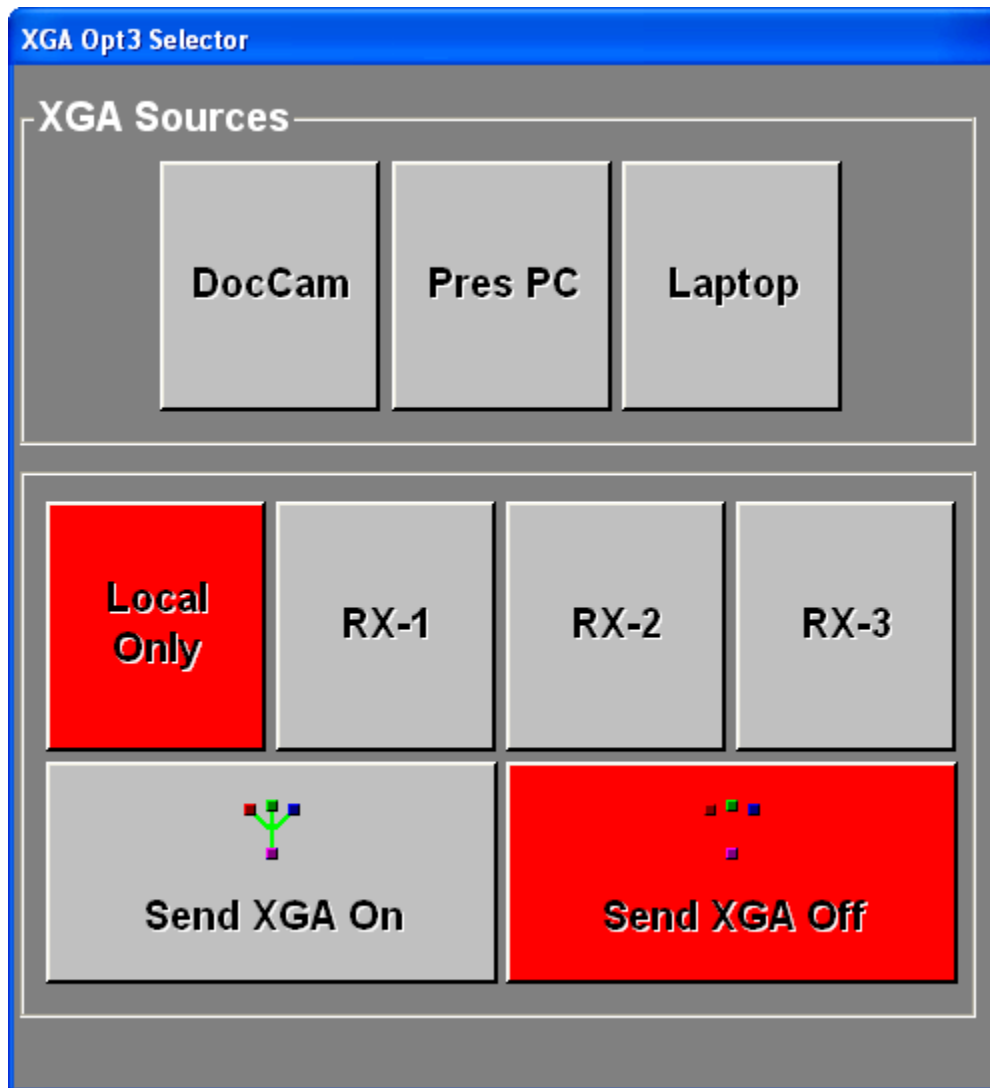
2415 Ventura Drive Woodbury, MN 55125

Phone: 651.578-1200

Fax: 651.578.2555

Web: [www.eastview-industries.com](http://www.eastview-industries.com)

## Operation:



Above is the XGA Selector Control Form. This is where all High Resolution media sharing is controlled between sites when the XGA Option is installed. The following paragraphs describe how to operate the XGA OPTION-3 Sharing.

---

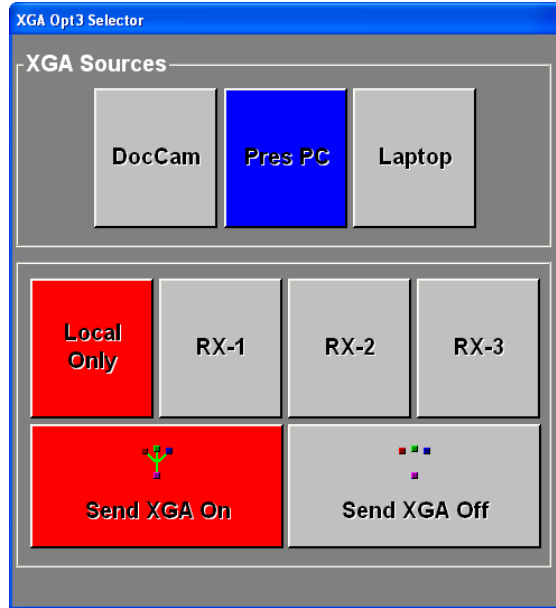
### Default Presentation

When the Room is powered on, the Local Only XGA input is already selected on the XGA Selector Control form. Simply pressing the Document Camera, PC or Laptop Source button from the XGA Selector from will display the High Resolution image of the selected source to the Local XGA Display (Projector or Plasma) in your classroom.

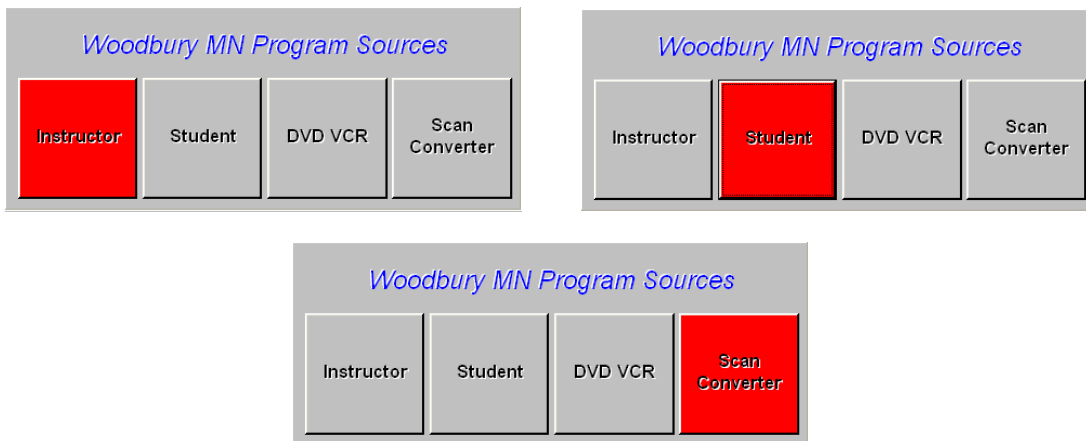
## Using the XGA Option in Session (with Secondary XGA Router)

*For information on using the XGA Option WITHOUT a secondary XGA Router, see page 6 below*

While originating a session, you can send the Doc Cam, PC or Laptop video signal to all remote sites in a session with a single button push. As the Originator, the “Local Only” button will be selected (**RED**) automatically. To send any XGA source to all remote sites, simply select the desired XGA Source (Doc Cam, PC or Laptop). The “Send XGA On” button will automatically be enabled and the selected source will now be displayed both in your local classroom and at all remote sites in the session (See Below):



When the “Send XGA On” button is red, all remote sites will now be sent the high-resolution image of the selected XGA Source. You may select any composite video source from the DL-Navigator Program Sources at any time without effecting the XGA transmission (See Below).



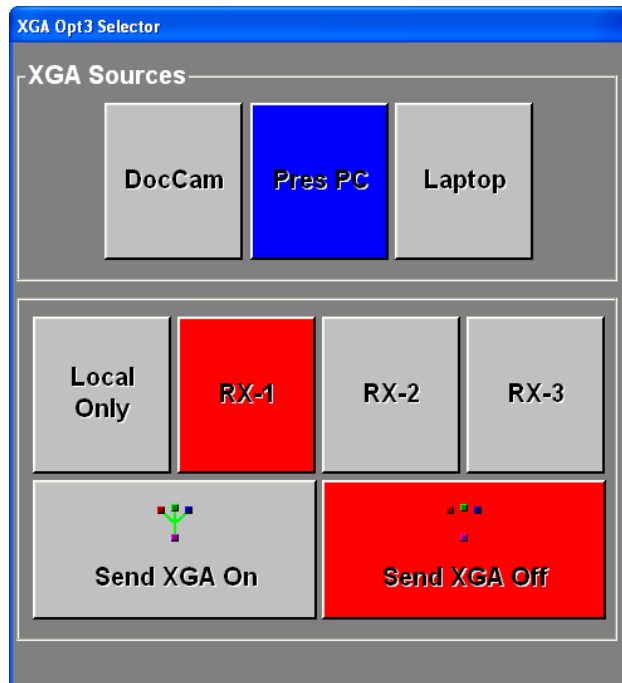
Selecting different video sources from the Program Sources Frame will switch the video in the Zero Monitor, but will leave the selected XGA Source displayed on the projector or plasma untouched. Selecting the “Scan Converter” will display a scan converted, lower quality composite video signal of the selected XGA Source.

To stop sending XGA content to the remote sites, simply press the “Send XGA Off” button from the XGA Selector Control Form.

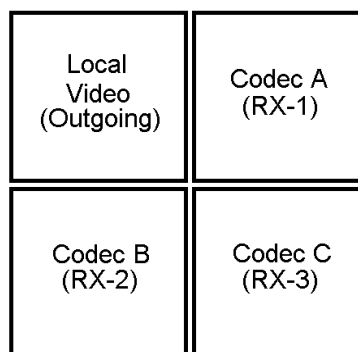
## Advanced Functionality: Sharing XGA Content as a Remote Site

It is also possible for instructors at the originating site to have students or facilitators at the remote sites share the Document Camera, Presentation PC or Laptop in their local classroom with the rest of the sites in the session.

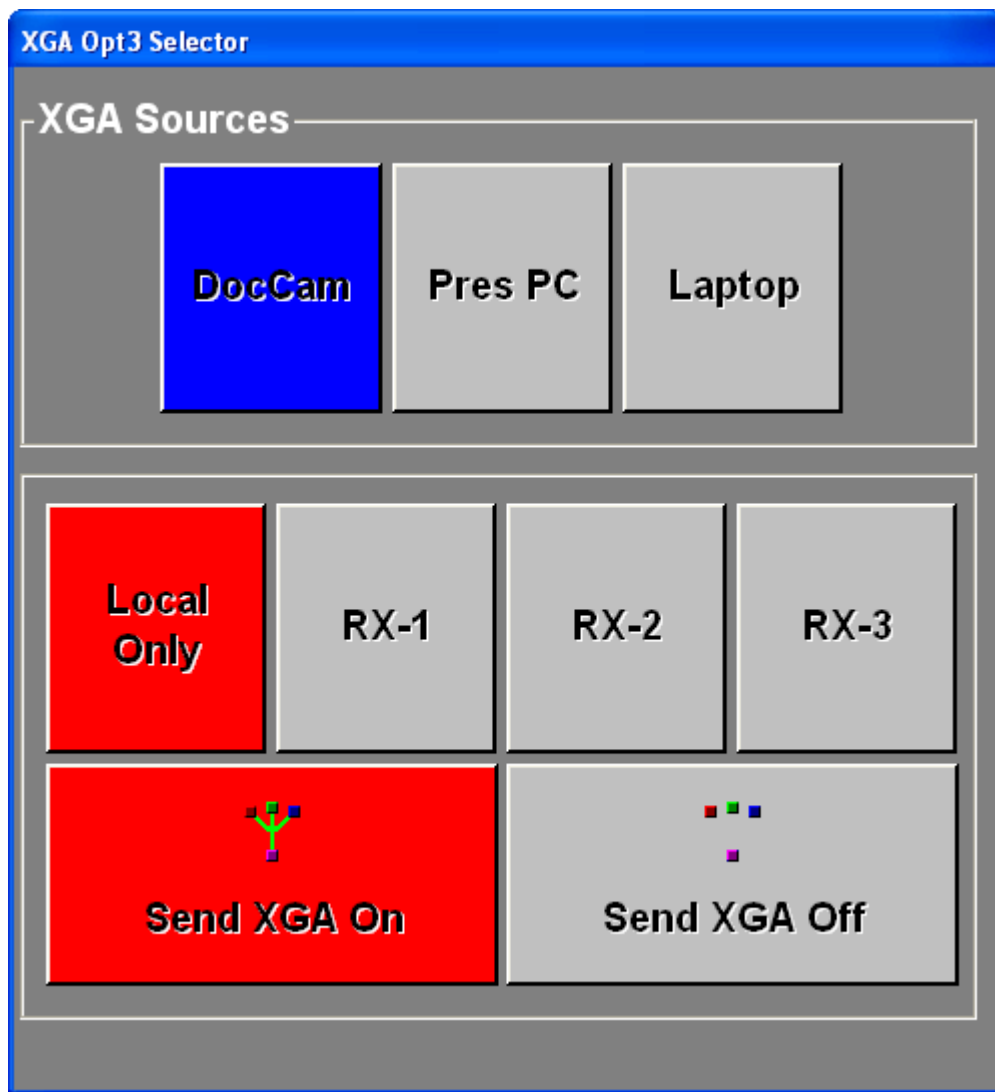
To accomplish this, the Originating site must first stop sending XGA as only one site can send at a time. Pressing the “Send XGA Off” button on the XGA Selector form will stop sending XGA to the remote sites. Next, all remote sites will need to select the appropriate Receive Signal (RX-1, RX-2, or RX-3) for the remote site that will be transmitting XGA. The instructor can do this for each remote site by taking Far End Control and selecting the appropriate RX-# (See Below).



“RX-1” refers to Receive, or Incoming Video 1, while “RX-2” refers to Incoming Video 2, etc. In a quad monitor configuration, the Codecs, or Receive video signals, are positioned as such:



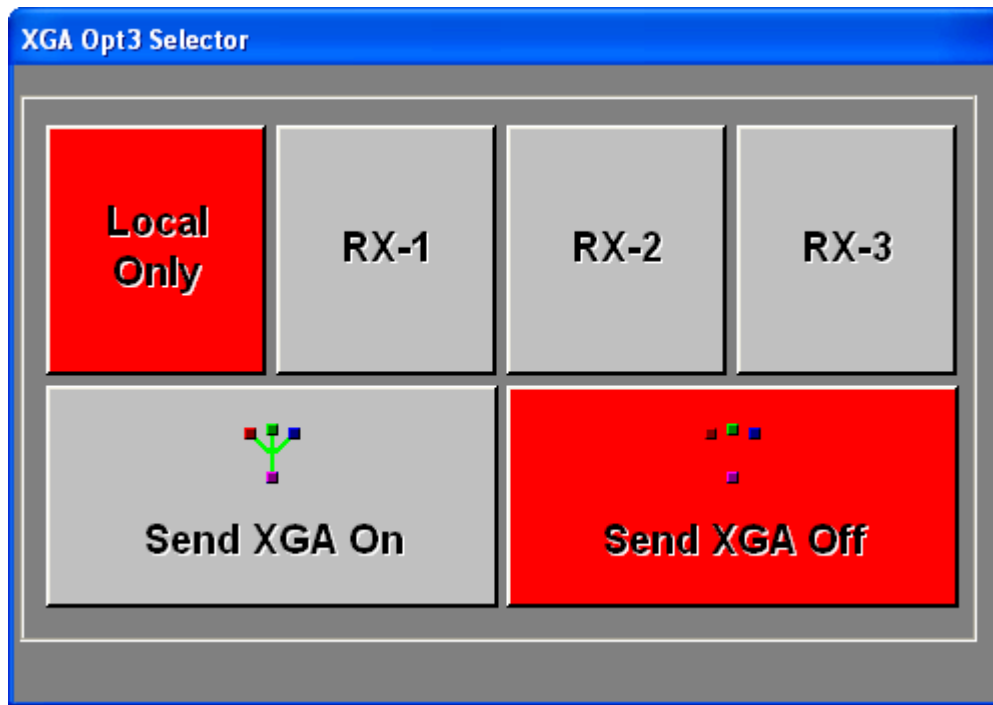
Once this is done at all sites, the remote site that will be transmitting their XGA will need to select the “Local Only” button (to send XGA you must ALWAYS be on Local Only), then select the desired XGA Source, and finally press the “Send XGA On” button. All sites in the session will now see the remote site XGA displayed on their local XGA Display (As seen in the picture below, the remote site is now sending the Document Camera to all sites in the session, including the Originator).



To return to the Originating Sites XGA, simply press the “RX-1” button at all remote sites. “Send XGA On” will automatically be turned off when one of the RX-1, RX-2 or RX-3 buttons are pressed. Finally, the Originating site must press the Local Only button to return to their XGA Sources. From here, selecting any XGA Source will again automatically transmit the High Resolution video to all remote sites in the session.

## XGA Functionality without a secondary XGA classroom router

Some sites do not have a secondary XGA router in their local classroom. These sites do not have the capability of switching between multiple XGA sources from the DL-Navigator touch screen. XGA Content can still be sent both from the Originating and Remote Sites, however, the process is slightly different. The following section details the procedure for XGA OPTION-3 Content sharing without this secondary classroom XGA router.



### Default Presentation

When the Room is powered on, the XGA Selector will automatically have the “Local Only” button selected. To display XGA on the Projector or Plasma, the user must simply plug in an XGA source (Laptop, PC, Doc Cam, etc.) to the XGA Input plate. Anything plugged into the XGA Input will automatically be shown on the Local XGA display device.

### Using the XGA Option in Session

While originating a session, you can send any XGA source plugged into the XGA Input to all remote sites in a session with a single button push. Simply pressing the “Send XGA On” button will display the XGA Content both in your local classroom and on the XGA displays devices in all remote classrooms in the session. To stop sending XGA Content to the remote sites, simply press the “Send XGA Off” button.

### Advanced Functionality: Sharing XGA Content as a Remote Site

Sharing XGA Content from a remote site without a secondary XGA classroom router is done in the same manner as those with the secondary XGA router. The only difference is that the XGA Source does not need to be selected from the XGA Selector form, but simply plugged into the XGA Input Plate. See the previous section above on “*Advanced Functionality: Sharing XGA Content as a Remote Site*” for instructions on how this is accomplished.